

ALL SS DIAPHRAGM SEALED PRESSURE GAUGE

DIRECT COUPLED TYPE



IPS-DG-04

SPECIAL FEATURES

- ROBUST TWO PIECE DESIGN
- THE DIAPHRAGM IS WELDED TO THE BODY TO ENSURE SEPARATION OF THE FILLING FLUID FROM THE PROCESS MEDIUM
- ALL SS CONSTRUCTION

APPLICATIONS

DIAPHRAGM SEALS ARE DESIGNED TO ISOLATE THE SENSING ELEMENT OF PRESSURE GAUGES AND PRESSURE SWITCHES FROM PROCESS FLUIDS THAT THEY MAY BE CORROSIVE, VISCOUS, SEDIMENTOUS AND / OR WITH A HIGH TEMPERATURE.

SPECIFICATIONS

STANDARD VERSION : 100 mm, 125 mm, 150 mm

Accuracy	:	±2.5% of F. S.
Ambient temperature	:	- 25°C to + 65°C
Process temperature	:	Max 300°C
Operating Pressure Range:	:	75% of Scale Value
Over pressure limit	:	≤ 100 bar : 125% of Max. Scale Value
	:	> 100 to ≤ 600 bar : 115% of Max. Scale Value
	:	> 600 to < 1600 bar : 110% of Max. Scale Value

Case & Bezel	:	AISI 304 SS (Bayonet Type)
Bourdon	:	AISI 316L SS
Socket	:	AISI 316L SS (Directly Welded to Case)
Movement	:	AISI 304 SS
Joints	:	Tig Argon Arc Welding

Protection	:	IP 65
Dial Pointer	:	Aluminium, black coloured Micrometer zero adjustable
Window	:	Sheet Glass
Blow off Disc	:	Neoprene
Gasket & Filling Plug	:	Neoprene

DRY BUT FILLABLE VERSION (OPTION FG)

Fillable Dampening Liquid	:	Glycerine 99.7% (Option - FG)
Ambient Temperature	:	Maximum 65°C
Process Temperature	:	Maximum 65°C
Window	:	Plexi Glass
Other Features	:	Refer Specification of Standard Version

GLYCERINE FILLED VERSION (OPTION PY)

Accuracy	:	± 2.5% of FS
Ambient Temperature	:	Maximum 65°C
Process Temperature	:	Maximum 65°C
Window	:	Plexi Glass
Dampening Liquid	:	Glycerin 99.7% (Others available as option)
Other Features	:	Refer Specification of Standard Version



Industrix Precise Solutions Private Limited

Room No – 303, Bhumika Residency, Plot No-21, Sector-20, Roadpali, Kalamoli, Panvel (Tal.), Raigad (Dist.), Maharashtra, India – 410218.

Mobile: +91 99309 98399 / +91 99674 97447

E-mail: admin@ipspl.in / sales@ipspl.in Website: www.ipspl.in

CIN : U52399MH2021PTC368555

ALL SS DIAPHRAGM SEALED PRESSURE GAUGE



DIRECT COUPLED TYPE

DIAPHRAGM SEAL SPECIFICATIONS

IPS-DG-04

STANDARD VERSION

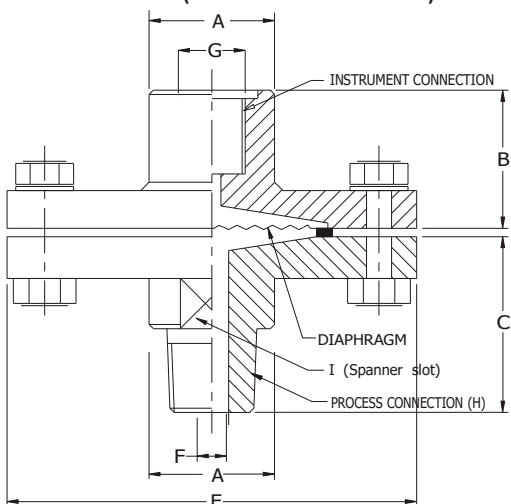
Seal Type	: S06 = -1 to 0 kg/cm ² & 0 to 70 kg/cm ² (Standard)
	: S07 = 100 kg/cm ² to 400 kg/cm ²
Process Temperature	: - 40 °C to 200 °C or as per fill fluid
Instrument Connection	: 1/2" BSP (F)
Process Connection	: 1/2" BSP (M)
Fill Fluid	: Silicon Oil - DC 200
Mounting	: Direct (Without capillary)



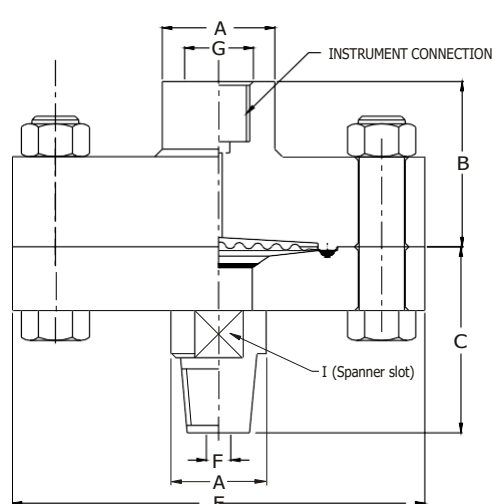
Diaphragm	: AISI 316L SS
Top Chamber	: AISI 304 SS
Bottom Chamber	: AISI 316 SS
Nuts / Bolts	: AISI 304 SS
Sealing Gasket	: PTFE

DIMENSIONS - STANDARD VERSION

TYPE "S06" (STANDARD VERSION)



TYPE "S07"



A	~ B	~ C	E	F	G	H	I	Approx. Wt. #
30	26	47	98	Ø8	1/2" BSP(F)	1/2" BSP (M)	25	1500.0

(# Weight in grams with box for Standard Model.)

A	~ B	~ C	E	F	G	H	I	Approx. Wt. #
30	44	49.5	110	Ø8	1/2" BSP(F)	1/2" BSP (M)	25	3000.0

(# Weight in grams with box for Standard Model.)

Notes : • Drawings are not to scale. • All Dimensions are in mm.



Industrix Precise Solutions Private Limited

Room No – 303, Bhumika Residency, Plot No-21, Sector-20, Roadpali, Kalamboli, Panvel (Tal.), Raigad (Dist.), Maharashtra, India – 410218.

Mobile: +91 99309 98399 / +91 99674 97447

E-mail: admin@ipspl.in / sales@ipspl.in Website: www.ipspl.in

CIN : U52399MH2021PTC368555

HOW TO ORDER

BASIC MODEL

PRESSURE GAUGE CODE

OPTIONAL EXTRAS

[It is recommended that the MOC of Diaphragm should be equivalent or superior than the MOC of Bottom chamber.]

TYPE

S06 -1 to 0 kg/cm² & 0 to 70 kg/cm² (Standard) **S07** 100 kg/cm² to 400 kg/cm²

(Select this option when dry seal is required)

INSTRUMENT CONNECTION

VN 1/4" BSP(F) **VP** 3/8" BSP (F) **VL** 1/2" BSP (F)(Standard) **VM** 1/2" NPT (F) **VO** 1/4" NPT (F)

TOP CHAMBER

XY AISI 316 SS

XW AISI 304 SS (Standard) **YA** AISI 316L SS

DIAPHRAGM (* Range up to 21 kg/cm²)

UJ AISI 316L SS (Standard)

UL HASTELLOY 'C'

UR TITANIUM

UW INCONEL 600

UM MONEL

UP SILVER*

UQ TANTALUM

YR METAL

SEALING GASKET

VI PTFE (Standard)

BOTTOM CHAMBER (* Refer Pressure v/s Temperature table below.)

TK AISI 304 SS

TT HASTELLOY 'C'

TM AISI 316 SS (Standard)

TD TANTALUM

TL AISI 316L SS

TZ PVC*

UH TITANIUM

UA PVDF*

TX MONEL

TY POLYPROPELENE*

MOC OF BOTTOM CHAMBER	PRESSURE V/S TEMPERATURE					
	20 °C	40 °C	60 °C	80 °C	100 °C	120 °C
PVDF	10 kg/cm ²	10 kg/cm ²	10 kg/cm ²	7 kg/cm ²	4 kg/cm ²	2 kg/cm ²
PP	10 kg/cm ²	10 kg/cm ²	6 kg/cm ²	4 kg/cm ²	1 kg/cm ²	NA
PVC	10 kg/cm ²	10 kg/cm ²	4 kg/cm ²	1 kg/cm ²	NA	NA

PROCESS CONNECTION

WE 1/4" BSP(F)

WI 1/4" NPT (F)

WY 1/4" NPT(M)

WS 1/4" BSP(M)

WR M20 x 1.5(M)

WC 3/8" BSP(F)

WH 1/2" NPT (F)

WA 1/2" NPT(M)

WT 3/8" BSP(M)

WP M33 x 1.5(M)

WD 1/2" BSP(F)

WL 3/4" NPT(F)

WK 3/4" NPT(M)

WU 1/2" BSP(M) (Standard)

WJ 3/4" BSP(F)

WF 3/4" BSP(M)

Note : Connections like Metric, PT/ PF/ Flaired / UNF/ G/ R etc can be provided on request.

PROTECTION ON WETTED PARTS (* With bore diameter 10 mm minimum & for connection size 1/2" & above only.)

VS PTFE LINING ON BOTTOM CHAMBER - 2 mm THICK (Max. Up to 150 °C)*

VV PTFE PROTECTION FOR DIAPHRAGM (Max. Up to 150 °C) (Suitable for Pressure Ranges only)

VZ PTFE COATING ON DIAPHRAGM (Max. Up to 315 °C)

FILLING FLUIDS (* Consult factory for specifications, price and delivery.)

US FLUROLUBE 4.2 [-45 to 175 °C]

UY SILICON DC 704 [10 to 337 °C]

UT FLUROLUBE 6.3 [-40 to 235 °C]

UZ SILICON DC 710 [7 to 371 °C]

UU FLUROLUBE FS-5 [-28 to 148 °C]

VA SYL THERM 800 [-40 to 315 °C]

UV FOOD GRADE OIL [-20 to 140 °C]

VB SYL THERM XLT [-100 to 260 °C]

UX SILICON DC 200 [-40 to 205 °C] (Standard)

VC HALOCARBON OIL*

REMOTE MOUNTING (With capillary of Max. Up to 6 Mtrs.)

SPECIFY IN METERS (e.g. 1.5 = 1.5 METERS 2.0 = 2 METERS)

CAPILLARY

PE AISI 304 SS

PG AISI 316 SS

CAPILLARY COVERED WITH ARMOUR (Applicable with PE or PG if selected)

PF AISI 304 SS

PH AISI 316 SS

PI PVC (Ambient Temp. Max. 60°C)

OTHER OPTIONS

TB HELIUM LEAK TEST

TC DRY SEAL ONLY WITHOUT INSTRUMENT

GH MATERIAL TEST CERTIFICATES*

* MATERIAL TEST CERTIFICATES WILL BE PROVIDED FOR WETTED PARTS ONLY WITH CHEMICAL COMPOSITION TESTING. FOR OTHERS, PLEASE CONSULT FACTORY.

Refer Datasheet EE for selection of Flushing Rings.

Note : Specifications and dimensions given in this product catalogue represents the state of engineering at the time of printing.

Modifications may take place and materials specified may be replaced by others without prior notice.

IPS-DS-01

XXX

XXX

XX

XX

XX

XX

XX

XX

XX

XX

3Mtr.

XX

XX

XX

