

STEEL CASE LOW & HIGH DIAHRAGM PRESSURE GAUGE



IPS-DG-01

SPECIAL FEATURES

- LOW COST VERSION
- SELECTABLE RANGES FROM
-6000 to 0 & 0 to 6000 mmWC, -1 to 0 & 0 to 25 kg/cm²
- STANDARD FOLLOWED IN GENERAL EN 837 - 3

APPLICATIONS

SUITABLE FOR CLEAN AIR, CORROSIVE ENVIRONMENTS & GASEOUS OR NON CRYSTALLIZED LIQUID MEDIA THAT WILL NOT OBSTRUCT THE PRESSURE SYSTEM.

SPECIFICATIONS

STANDARD VERSION : 100 mm & 150 mm

Diaphragm Type	:	HP : -1 to 0 kg/cm ² & 0 to 25 kg/cm ₂
	:	LP : -6000 mmWC to 0 & 0 to 6000 mmWC
Accuracy	:	±2.5% of F. S.
Ambient temperature	:	- 25°C to + 65°C
Process temperature	:	Max 100°C
Operating pressure range	:	75 % of Scale Value
Over pressure limit	:	130 % of Scale Value

Case & Bezel	:	Steel (Painted, Push Fit Type)
Top Chamber	:	Steel (Painted)
Bottom Chamber	:	AISI 316 SS
Gauge Connection	:	½" BSP (M)
Movement	:	Copper Alloy
Diaphragm	:	Spring Steel with PTFE Protection for HP ranges & AISI 316L SS for LP ranges

Note: AISI 316L SS Diaphragm for HP ranges is available on request.

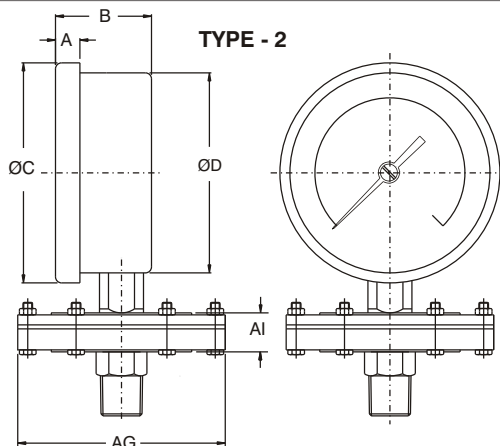
Dial	:	Aluminum, black graduation on white background
Pointer	:	Aluminum, black Coloured, Slotted Zero adjustable
Window	:	Sheet Glass
Gasket	:	Neoprene

Temperature effect:

The variation of indication caused by effects of temperature is to be calculated by below formula; which is to be added in the specified accuracy while measurement :-

Formula : $\pm 0.08 \times (t_2 - t_1) \% \text{ of F. S.}$

where t₁ = reference temperature (+20°C) and t₂ = ambient temperature in °C.



NS	A	B	ØC	ØD	AG	AI	Weight in gram (With Box)	Type
100	13	46.5	98.5	97	158	17.5	2520.00	LP
150	15	48	155.5	154	158	17.5	2960.00	LP
100	13	46.5	98.5	97	98	19	1350.00	HP
150	15	48	155.5	154	98	19	1850.00	HP

LP Type = -6000 mmWC to 0 & 0 to 6000 mmWC

HP Type = -1 kg/cm² to 0 & 0 to 25 kg/cm²

Notes : • Drawings are not to scale. • All Dimensions are in mm.
• NS = Nominal Size.



Industrix Precise Solutions Private Limited

Room No – 303, Bhumika Residency, Plot No-21, Sector-20, Roadpali, Kalamboli, Panvel (Tal.), Raigad (Dist.), Maharashtra, India – 410218.

Mobile: +91 99309 98399 / +91 99674 97447

E-mail: admin@ipspl.in / sales@ipspl.in Website: www.ipspl.in

CIN : U52399MH2021PTC368555

STEEL CASE LOW & HIGH DIAHRAGM PRESSURE GAUGE

RANGE TABLE

Note : IP SPL offers National / International Scales like mbar, mmWC, inHg with psi, mWC, inWC & Dual Scale or Equivalent scales as per the requirement can be provided on request.

Following are the example tables for mmWC & kg/cm² Scale.

PRESSURE, VACUUM & COMPOUND RANGES (HP)

PRESSURE RANGE

SINGLE SCALE - kg/cm ²				DUAL SCALE - kg/cm ² with psi					
0/0.6	0/1.6	0/4	0/10	kg/cm ²	psi	kg/cm ²	psi	kg/cm ²	psi
0/1	0/2.5	0/6	0/16	0/1	0/15	0/4	0/60	0/10	0/150
				0/2	0/30	0/7	0/100	0/16	0/220

VACUUM & COMPOUND RANGE

SINGLE SCALE - kg/cm ²			DUAL SCALE - kg/cm ² with psi					
-1/0.6	-1/3	-1/9	inHg with psi	mmHg with kg/cm ²	inHg with psi	mmHg with kg/cm ²	inHg with psi	mmHg with kg/cm ²
-1/1.5	-1/5	-1/15	-30/0	-760/0	-30/60	-760/4	-30/200	-760/14
			-30/15	-760/1	-30/100	-760/7		
			-30/30	-760/2	-30/150	-760/10		

PRESSURE, VACUUM & COMPOUND RANGES (LP)

PRESSURE RANGE

SINGLE SCALE - mmWC (LP)			
0/250	0/1000	0/2500	
0/400	0/1600	0/4000	
0/600	0/2000	0/6000	

VACUUM & COMPOUND RANGE

SINGLE SCALE - mmWC (VACUUM)		
- 250/0	- 1000/0	- 2500/0
- 400/0	- 1600/0	- 4000/0
- 600/0	- 2000/0	- 6000/0

SINGLE SCALE - mmWC (COMPOUND)		
- 100/150	- 400/600	- 1000/1500
- 150/250	- 600/1000	- 1500/2500
- 200/400	- 800/1200	- 2000/4000

HOW TO ORDER

BASIC MODEL

Example

CODE

IPS-DG-01

NOMINAL SIZE

F 100 mm
H 150 mm

TYPE OF MOUNTING

2 DIRECT BOTTOM ENTRY

TOP CHAMBER

CU Steel Painted (Standard)

DIAPHRAGM (Note: AISI 316L SS Diaphragm for HP ranges is available on request)

CV SPRING STEEL with PTFE protection (Standard) - for HP ranges UJ AISI 316L SS (Standard) - for LP ranges

BOTTOM CHAMBER

TM AISI 316 SS (Standard)

GAUGE CONNECTION

4BM 1/2" BSP (M) (Standard) 4NM 1/2" NPT (M)

RANGE

REFER RANGE TABLE

OPTIONAL EXTRAS

PW FIVE POINT CALIBRATION CERTIFICATE RH CUSTOM DESIGNED DIAL
SW DIAL TAG MARKING GH MATERIAL TEST CERTIFICATES#
SX SS TAG PLATE

X
X
XX
XX
XXX
0/250 mmWC
XX

#MATERIAL TEST CERTIFICATES WILL BE PROVIDED FOR WETTED PARTS ONLY WITH CHEMICAL COMPOSITION TESTING. FOR OTHERS, PLEASE CONSULT FACTORY.

FOR OTHER OPTIONAL ITEMS, PLEASE CONTACT FACTORY FOR DELIVERY AND MINIMUM QUANTITY OF ORDER.

Note : Specifications and dimensions given in this product catalogue represents the state of engineering at the time of printing.

Modifications may take place and materials specified may be replaced by others without prior notice.